

Wood/Aluminium windows for Education Projects

For fully-costed,
price-competitive
solutions
see inside

FALMOUTH UNIVERSITY

The Creative Bridge

> Increased light and improved ventilation at an affordable price

VELFAC®

Affordable design & durability

From a single classroom extension to a new-build school, VELFAC windows and doors offer a **competitive alternative to all-aluminium systems** and come with a host of benefits including:

- › **Inner pine framing** provides a warmer, more natural feeling to learning environments
- › **Slim frames maximise daylight**, enhancing internal spaces and reducing lighting bills
- › **Identical sightlines** for fixed and opening units mean classroom screens can be created with clean, uniform aesthetics
- › **Ventilation versatility** - different combinations of opening functions, trickle vents and louvres can be provided to achieve the required ventilation strategy
- › **Secured by Design** accreditation on standard windows and doors
- › **High energy performance** - U-values as low as 0.85 W/m²K for triple glazed units
- › **Technical and design consultancy** from project vision through to post-installation support
- › **12 year warranty** on windows, 5 years on doors
- › **Minimal maintenance** - only regular cleaning and oiling of hinges required to make VELFAC windows last 40 years or more

› Find drawings and technical information on products-commercial.velfac.co.uk

› For enquiries and technical advice, get in touch: T 01223 897 100
E sales-support@dovista.com

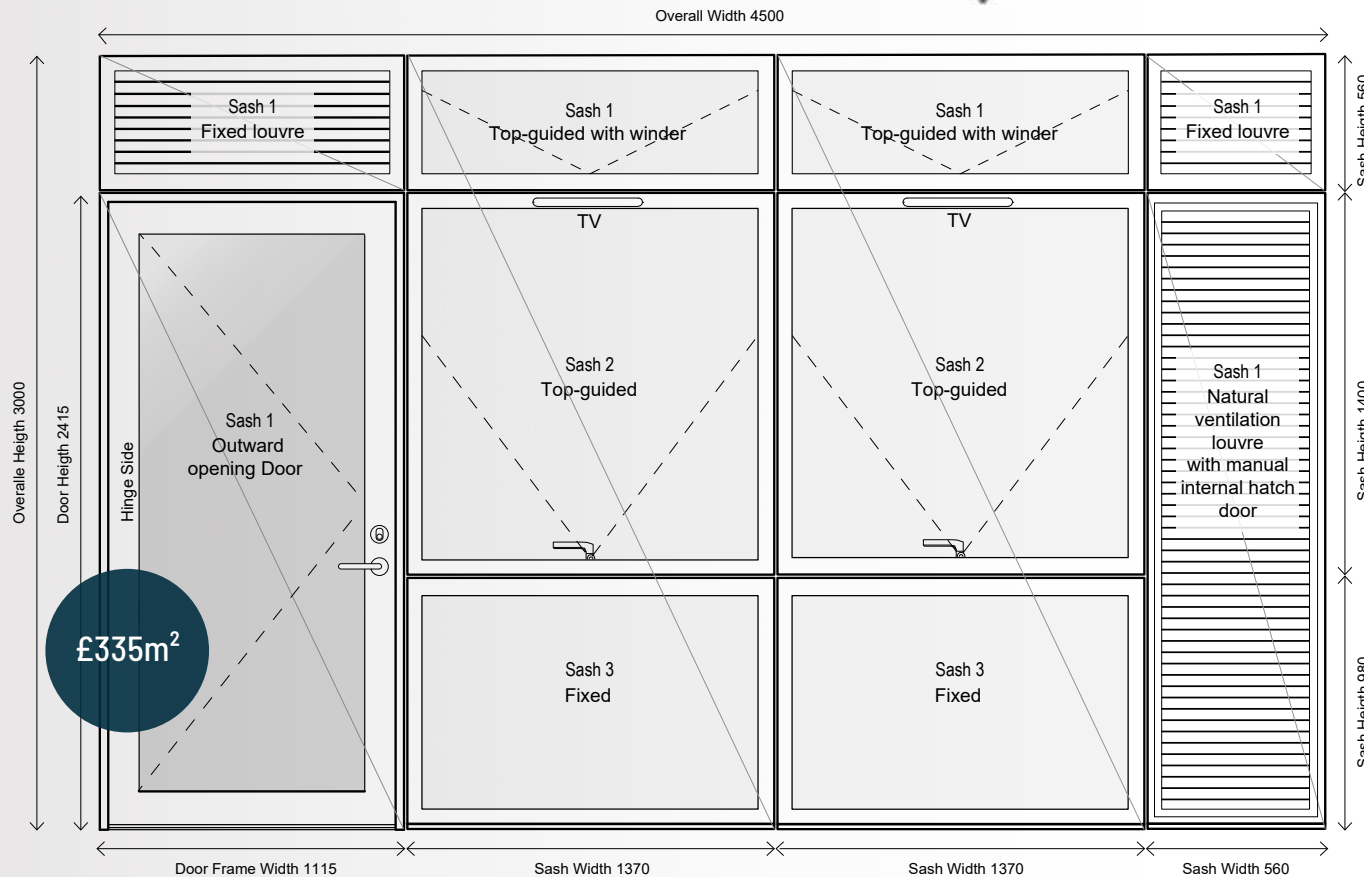
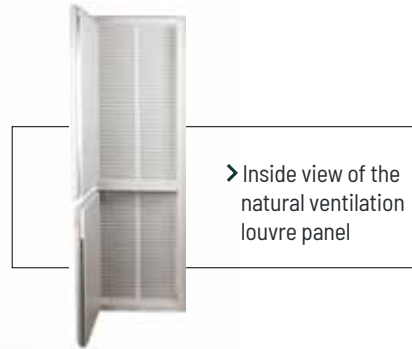


› **Location:** Sunderland
› **Project:** St Peter's College
› **Architect:** Browne Smith Baker & Partners

Cover photo
› **Location:** Penryn
› **Project:** Falmouth University
› **Architect:** BDP

Classroom screens

This example window and door configuration for a typical classroom is available at £335m² (design & supply), including the adjacent extensive list of specifics.



Specific Inclusions

- Secured by Design accredited with BM Trada Q-Mark
- Acoustic rating Rw36dB
- U-value 1.58W/m²K
- Internal clear lacquered Pine frame (painted frames also available)
- External PPC finish in full RAL Classic colour range
- Key-locking window handles
- Security key locking restrictors to low level openers
- Trickle vents
- Low level ventilation louvre with internal hatch door
- High level fixed louvres to connect to mechanical ventilation system
- Cill pressings in aluminium to windows
- Entrance door with stainless steel handles, self-closer, and multi-point lock
- Design drawings including installation details and structural calc.s where required
- 12 Year Warranty on windows and 5 years on doors

Design / Performance options

- Solar control glazing +5% (g 0.37, Lt 0.70)
- Acoustic glazing to achieve Rw39dB +10%
- Acoustic trickle vents +£80 l/m (Dn,e,w 40dB)
- U-value of 0.85W/m²K approx. with triple glazing
- Electric motorised high level openers £150 per motor (excluding control gear)
- Heavy duty VELFAC Aluminium doors for corridors and main entrances £1,150-1,400m² depending on ironmongery package
- For combinations of the above, please contact us for specific cost advice for your project

Installation

- Fitting by a VELFAC Approved Installer is available at £70-75m² depending on project size and location

➤ VELFAC 200 wood/aluminium windows. VELFAC Ribo wood/aluminium door

- > Location: Gloucester
- > Project: St Peters primary school
- > Architect: Feilden Clegg Bradley Studios



A better indoor climate

Light-filled, well ventilated classrooms and school buildings promote a healthier indoor climate, proactively supporting students' enjoyment of their studies. Natural daylight also reduces the need for artificial light and heat, reducing energy bills and improving sustainability.

Slim frame design for more natural light

The VELFAC slim frame design with 54mm sightlines, can increase levels of natural light by up to 25% more than traditional window systems. To minimise the impact of excessive solar gain typically to South or West facing facades, VELFAC windows can be supplied with solar control glazing. Standard solutions can achieve g-values of 0.37, or 0.28 for high risk areas with large screens.

Fresh air solutions

A range of ventilation strategies ensures constant fresh air. Manually opening windows used at reachable level can be used in combination with high level remote operated windows to provide a solution for single sided ventilation.

Remote operated windows can be fitted with fully concealed motors housed within the timber frame, and these can be wired to a computer BMS as part of an advanced natural ventilation strategy. All windows whether opening, motorised or fixed retain the same sightlines, providing a uniform aesthetic.

Ask our technical team for advice on the ideal light and ventilation strategy for your education project at sales-support@dovista.com

> VELFAC window motors are completely housed within the wood frame, avoiding unsightly surface mounted units



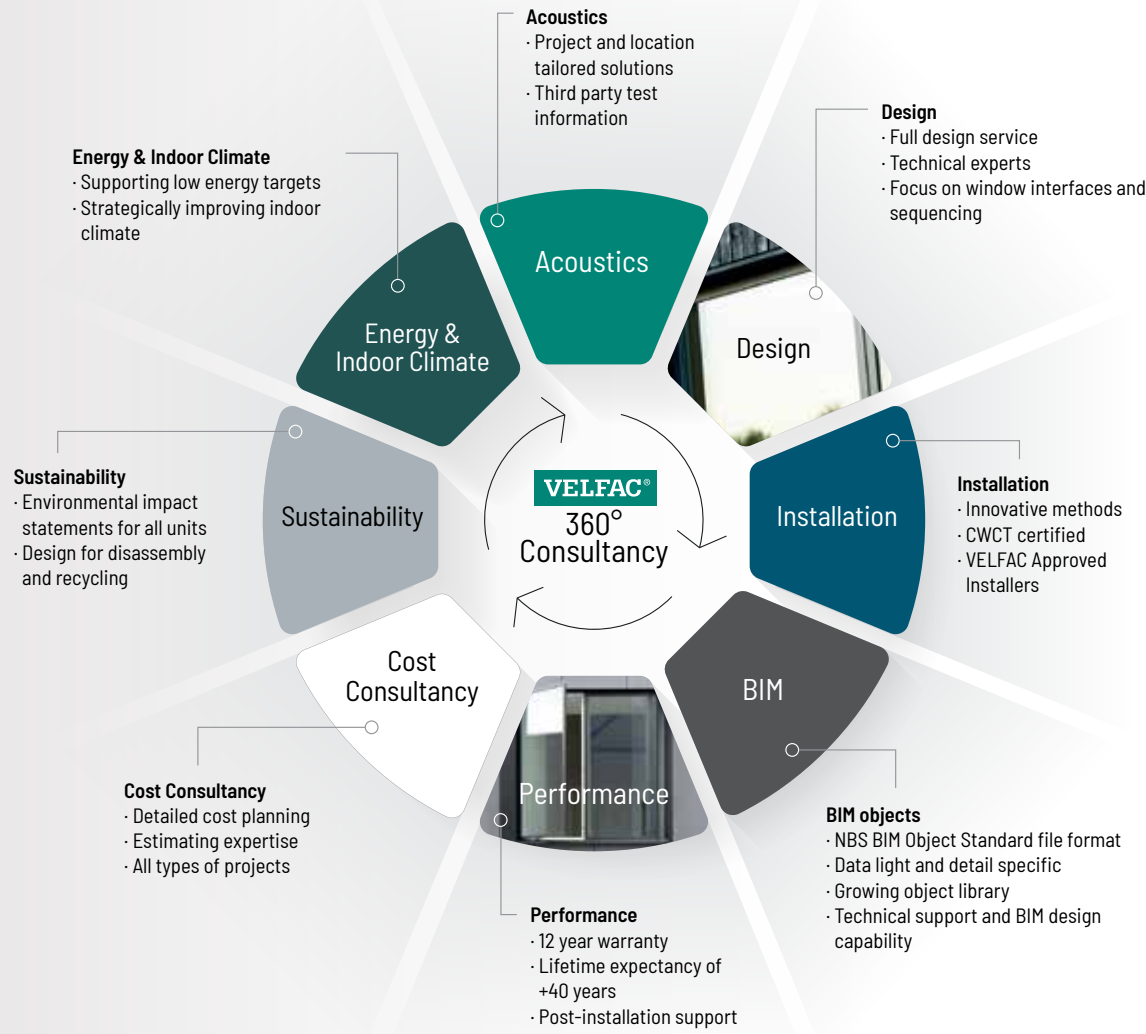
> Location: Crawley
> Project: St Wilfred's School
> Architect: Curl La Tourelle



> Location: Kent
> Project: Sevenoaks School - Aisher House
> Architect: Tim Ronalds Architects

360° Consultancy

Use our knowledge of the education sector to add even more value to your project. Our project-specific advice and consultancy covers the full range of technical and design areas:



Contact our sales support team for all product, technical and costing advice at sales-support@dovista.com



> Location: Kent
> Project: Holmewood school
> Architect: Studio Partington

Sustainability

The VELFAC system embodies **sustainable design and manufacture**, with every component of our glazing system chosen to limit our **impact on the environment**.

VELFAC units come with an environmental impact statement which provides proof of **sustainable construction and performance**, from our ISO14001-accredited manufacturing facilities to the use of water-based wood treatments.

Units are also deliberately designed for **disassembly and recycling** – another contribution to a less wasteful society.

93%

*So much can
be reused.*

VELFAC 200 can
easily be taken
apart and sorted.



Windows for life



> Location: Ewell
> Project: Ewell Grove Primary School
> Architect: HLM Architects



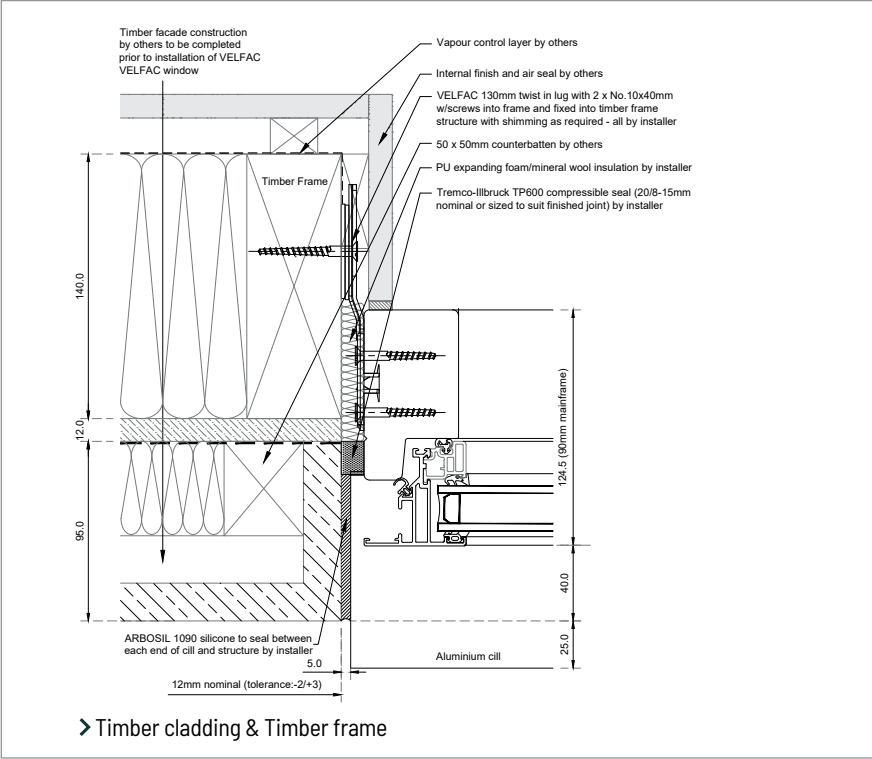
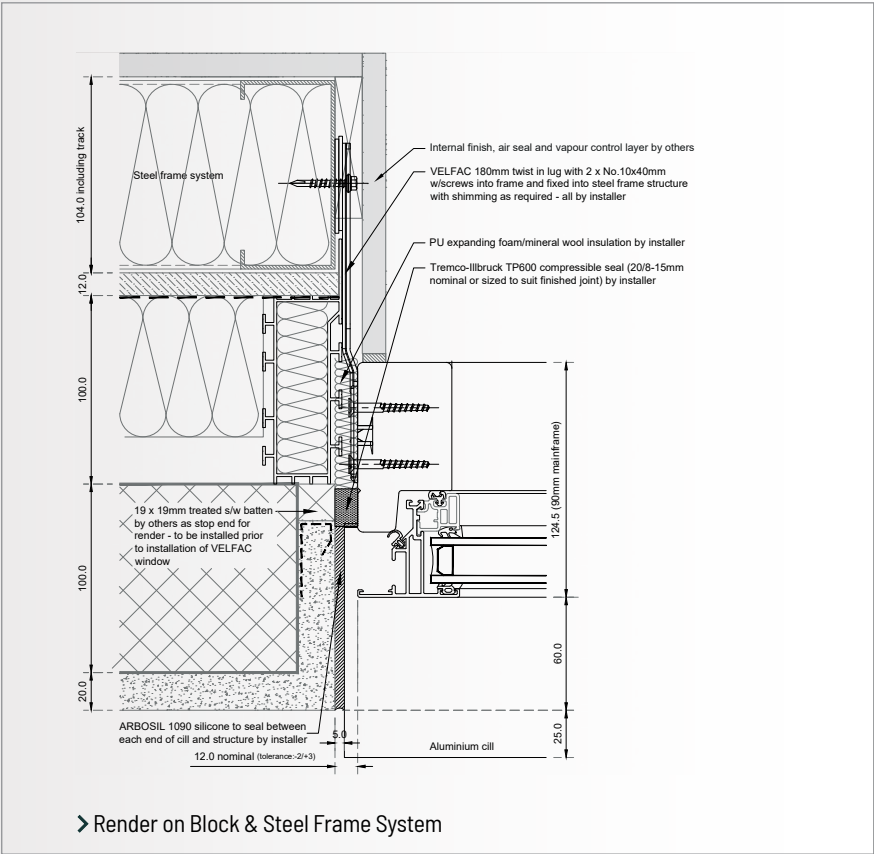
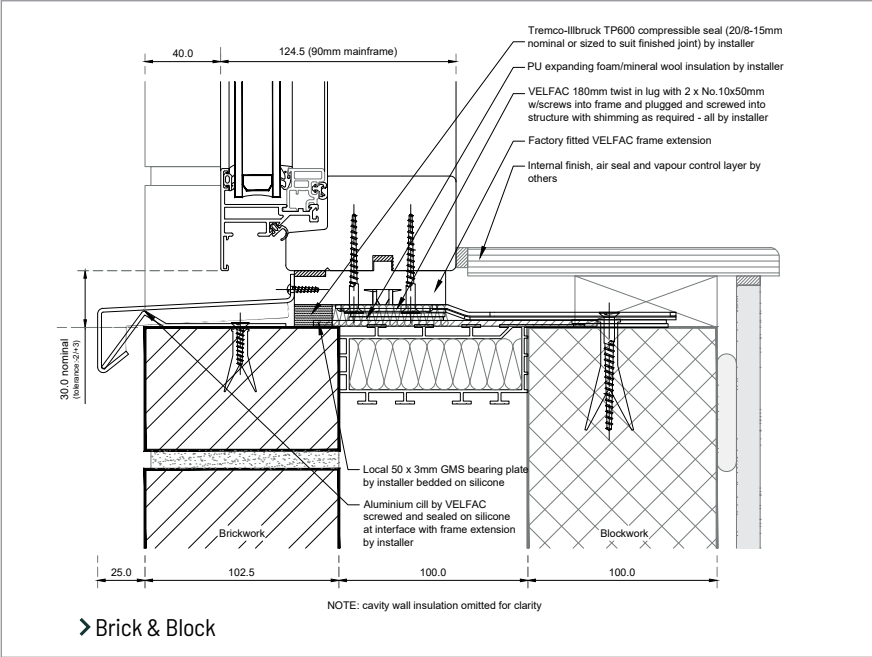
> Location: Bath
> Project: Kingswood School
> Architect: Stonewood Design



> Location: Worthing
> Project: Bohunt School
> Architect: ECE Architecture

Detailed interface drawings

VELFAC advisors can work with specifiers to help create project specific building details, and a number of standard solutions are available for download at VELFAC.co.uk.





Secured by Design

 Official Police Security Initiative



Please ask for our FSC®-certified products.

VELFAC
 DOVISTA UK Limited
 The Forum, Ermine Business Park
 Lancaster Way
 Huntingdon
 PE29 6XU

T: 01223 897 100
 E: sales-support@dovista.com
 www.VELFAC.co.uk



› Location: Glasgow
 › Project: Faith School
 › Architect: BDP



Photo credit: David Barbour